



Brindishe
Federation

Brindishe Federation Newsletter

Friday 4th November 2022

Help in Lewisham with cost of living crisis.

Earlier this week, Lewisham began offering a Warm Welcome in local libraries, where people can come together and use the facilities in a warm, welcoming environment. This has been done in response to the cost of living crisis and rising energy prices - Many local people and businesses are worried about this and the impact it is having on everyday life. Everyone is welcome to pop into these warm spaces, to read, do some homework or chat to a volunteer.

This evening, ITV London were in the borough doing a live show for the 6pm news. Lewisham were able to showcase their warm spaces and highlight the work they are doing with partners across the borough to help ease the pressure on local people this winter. You will be able watch it on catch up on the [ITV Hub](#).

Lewisham Warm Welcomes



About

To support individuals affected by increased living costs this Winter, local establishments are beginning to set up as Warm Welcomes.

What are Warm Welcomes?

Community groups are coming together to offer spaces where people can pop in free of charge. All welcomes are currently different, some may be providing hot drinks, others may be providing hot food, others may be providing social activities and additional support.

Check the Warm Welcomes map [here](#) to find your nearest space and get more information. Please check each listing for an overview of opening times and services provided. Other terms also being used include: Winter Welcomes, Warm Spaces

Lewisham Council's libraries are also open as Warm Welcomes. These are included on the [Warm Welcomes map which can be found here](#) and [on the Council's website to find your nearest library and see their opening times](#).

Who is involved?

Many local community groups have independently set up their own Warm Welcomes and some are working in partnership around local areas.

Lewisham Local is working with partners to map and promote the Warm Spaces and provide additional wrap-around support. Partners include [Lewisham Council](#), [Age UK Lewisham & Southwark](#) and [Citizens Advice Lewisham](#).

Looking for additional support?

You can find contact details for other local support organisations that can help you on our request support page: [Request Support – Lewisham Local](#)



Reception Open Days

Please see below our open days for parents/carers applying for Reception places for September 2023.

Brindishe Green	Brindishe Manor	Brindishe Lee
Thursday 17th November 10am and 4.30pm	Monday 14th November 9:30am and 4:30pm	Wednesday 16th November 9:30am and 4:30pm

For further information on open days and how to book a place on the tour, please contact individual schools. Email details can be found on our school websites.

Brindishe Weekly Online Safety Bulletin

Be Internet Awesome

Google have launched their own online safety game, designed to allow children to make smarter and safer decisions.

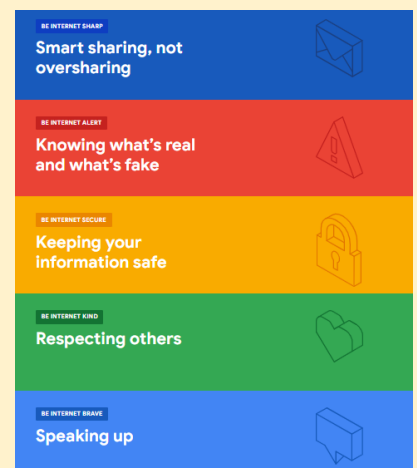
It can be played on phones, tablets or on a computer, and offers a good starting point for conversations about online safety.

To play the game click here:

https://beinternetlegends.withgoogle.com/en_uk/interland

For a helpful guide for the game's content, click here:

https://beinternetlegends.withgoogle.com/en_uk/parents/





Rights Respecting at Brindishe Schools - Article of the Week

Remembrance & Article 38

Remembrance unites people of all faiths, cultures and backgrounds in honouring those who defend our democratic freedom and way of life.

The UK has a long tradition of marking Armistice Day, calling to mind the moment when fighting ceased at the end of the First World War, at 11.00am on the 11th November 1918.

Article 38

Governments must not allow children under the age of 15 to take part in war or join the armed forces. Governments must do everything they can to protect and care for children affected by war and armed conflicts

Why is it important to remember and commemorate those who have fought in wars?

Poppies are used as symbols during Remembrance Day events. [Watch this short CBeebies animation](#) and discuss what the film is about. Discuss with your child how the rabbit is feeling during the war. If the rabbit was a child, what rights are affected?

In Brindishe Schools, we think and talk about children who are affected by war all the time. Some of our own children have fled their home country for safety. Brindishe children make them feel welcome, safe and happy in their new school.



Key Federation Dates

- INSET DAY – Brindishe Federation – Friday 25th November
- End of Term – Friday 16th December 2022
- Closing date for primary applications – Sunday 15th January 2022
- Primary offer day - Monday 17 April 2023 (you will get an email in the evening telling you where your child has been offered a place)

Governing Body Dates

If you would like to attend a Brindishe Federation Governing Body meeting as an observer, please email our Chair, Liz Murphy - lizcmurphy@gmail.com

Autumn 2	Brindishe Manor	Tuesday 6 th December 2022, 6pm
Spring 1	Brindishe Lee	Tuesday 7 th February 2023, 6pm
Spring 2	Brindishe Green	Thursday 23 rd March 2023, 6pm
Summer 1	Brindishe Manor	Tuesday 23 rd May 2023, 6pm
Summer 2	Brindishe Lee	Thursday 13 th July 2023, 6pm



Brindishe
Federation

And finally

Please can we remind all parents/carers of our lines of communication

If you would like to speak to or arrange to meeting with a teacher, please email info@ with the subject FOA: Attention of class teacher e.g. FOA: Attention Ms. Parker.

Our online platforms include WeDuc for regular messages and reminders, Horizons for pupil's information and payment systems and ItsLearning for home-learning tasks. Brindishe Schools currently do not subscribe or manage any other online sites or social media platforms.