

# Newsletter

Friday 25th April 2025



Brindishe  
Green

## What has been happening this week?

We hope that you all had a lovely rest during the break from school, and that you were able to spend time with friends and family. We were all very impressed with how well the children settled back into school on Tuesday after the break.

On Wednesday our Year 3 children visited The Tate Modern to learn about how artists use fabric to tell stories.

Thank you to the parents/carers who supported.

Also this week our Year 2 children enjoyed an exciting Circus workshop and learnt new skills they had never experienced before. This links to the text they are using in English - Leon and the Space Between.

## What is happening next week?

On Saturday, 40 children from across the school will be taking part in the London Mini Marathon and raising money for the school. We look forward to hearing how they get on!

On Tuesday, **Year 1** are visiting The Unicorn Theatre to watch a performance of Beegu. Thank you to the parents who are supporting on the visit.

On Thursday next week, the Breck Foundation ([www.breckfoundation.org](http://www.breckfoundation.org)) will be visiting school to talk to the children (Years 1-6) about the importance of online safety.

**On Monday 28<sup>th</sup> April at 6pm, they will provide an online session for all parents/carers.** Please try and attend if you can, as it is important that you know what your child will be learning. Please see Weduc message for the Zoom link and more information.

## Arriving After 8.45am

If your child is late, an adult must come into school and sign them in using the electronic screen.

If your child is in Nursery or Reception, you may be asked to wait with your child until the allocated member of staff is free to walk them to their classroom. We appreciate your patience if you are asked to wait.

## School Photographs

Our photographer, Brian Morris, will be visiting school week beginning 28th April to take individual, class and sibling photographs. We have put together a **rough timetable** for the running order, but please note, this is **only a guide**. It will change depending on how smoothly things are running.

Monday	
9.00 - 10.30	Year 3 <ul style="list-style-type: none"><li>• Magpie</li><li>• Kingfisher</li><li>• Hawk</li></ul>
10.30 - 12.00	Year 2 <ul style="list-style-type: none"><li>• Kestrel</li><li>• Woodpecker</li><li>• Parakeet</li></ul>
12.00 - 12.45	Lunch
12.45 - 2.00	Year 1 <ul style="list-style-type: none"><li>• Little Owl</li><li>• Goldfinch</li><li>• Swift</li></ul>
2.00 - 3.00	Year 6 <ul style="list-style-type: none"><li>• Emperor Penguin</li><li>• Shoebill</li><li>• Cormorant</li></ul>

Tuesday	
9.00 - 10.30	Reception <ul style="list-style-type: none"><li>• Robin</li><li>• Sparrow</li><li>• Wren</li></ul>
10.30 - 12.00	Year 5 <ul style="list-style-type: none"><li>• Macaw</li><li>• Heron</li><li>• Cassowary</li></ul>
12.00 - 12.45	Lunch
12.45 - 2.15	Year 4 <ul style="list-style-type: none"><li>• Puffin</li><li>• Red Kite</li><li>• Hornbill</li></ul>
2.15 - 3.00	Year 4 Class photos if time



Wednesday	
9.00 - 9.30	• Nursery
9.30 - 1.00	Class photos
1.00 - 1.30	• Lunch
1.30 - 3.15	Class photos <ul style="list-style-type: none"><li>• Year 3 - Magpie, Kingfisher, Hawk</li><li>• Year 4 - Puffin, Red Kite, Hornbill</li><li>• Year 5 - Macaw, Heron, Cassowary</li></ul>

Thursday	
9.00 - onwards	<ul style="list-style-type: none"><li>• Reception - Robin, Sparrow, Wren</li><li>• Year 1 - Little Owl, Goldfinch, Swift</li><li>• Year 2 - Kestrel, Woodpecker, Parakeet</li><li>• Year 6 - E Penguin, Shoebill, Cormorant</li></ul>

Brian Morris Photography

# Lewisham SEN Workshops for Parents/Carers

Lewisham is running a week of parental workshops running from **Friday 25th April- Thursday 1st May** (including Saturday 26th April.) These workshops are specifically targeted at Lewisham parents/carers of children at SEN Support and cover a range of topics. The workshops will be run in person in 6 locations across Lewisham and both in the morning and in the evening. For more information and to book your place, please see the attached flier.



**23** If I have a disability, I have the right to special care and education

Do you want to know how to support your child with language?

Is attendance at school hard for your child?

Need to find out why safe relationships are important?

Want to know how schools support children with SEN without an EHC Plan?

Need some ideas on how to get your child ready to learn?

Workshops will be held in venues across Lewisham during and after working hours

**Free SEND Support Parent/Carer Workshops: Friday 25<sup>th</sup> April – Thursday 1<sup>st</sup> May**






## Something Wonderful to Celebrate

These children have been praised this week for their wonderful learning and behaviour in school.

## Attendance and Punctuality

E Penguin	Nevaeh & Salih
Cormorant	Dominic & Cindy
Shoebill	Janu & Amara
Macaw	Charlie & Noah
Heron	Johannes & Elsa
Cassowary	Arthur & Zahra
Hornbill	Hornbill Class
Red Kite	Khadija & Ryan
Puffin	Keziah & Ned
Magpie	Amelia, Abdul & Magpie Class
Hawk	Eva & Kaitlyn
Kingfisher	Kingfisher class
Woodpecker	Kimberley & Elio
Parakeet	Aaron & Eitlyn
Kestrel	Aaron & Akssar
Swift	Finley & Skylah-Rose
Little Owl	Phoebe & Amo
Goldfinch	Eva & Sofia

Overall school attendance this week:	92.08%	
A Massive Well Done to Cormorant 100% Attendance!	Cormorant	100%
Top CLASSES for good Attendance Well done to you All!	Redkite	99.54%
	Shoebill	99.47%
	Sparrow	96.84%
	Hornbill	96.72%
The Top Classes for BEST punctuality	Goldfinch, Woodpecker, Hawk, & Cassowary A huge well done! 😊	

## Some Important Dates - Summer Term

May 2025		June 2025	
Mon 5 <sup>th</sup> May	Bank Holiday	Wk beg 9 <sup>th</sup> June	Year 1 Phonics check
Year Group Performance - 9.00am Year 3 – Tuesday 6 <sup>th</sup> May Year 2 – Tuesday 20 <sup>th</sup> May Year 5 – Thursday 22 <sup>nd</sup> May		Fortnight beg 2 <sup>nd</sup> June	Year 4 Times Tables
Wk beg – 12 <sup>th</sup> May	Year 6 SATs week	27 <sup>th</sup> June	INSET Day – school closed to children
Mon 26 <sup>th</sup> – 30 <sup>th</sup> May	Half Term	Sports Days – 9.10am 23 <sup>rd</sup> June - Rec – Playground 24 <sup>th</sup> June - Year 1 – Playground 25 <sup>th</sup> June - Year 2 – Playground 26 <sup>th</sup> June - Year 3 – Playground 5 <sup>th</sup> June - Year 4/5/6 – Ladywell Arena	

# A message from the Brindishe Friends Group



## BFG meeting - 1 May 2025 at 4.30pm

There will be a BFG meeting at the school next **Thursday 1 May, starting at 4.30pm**, and we'd love you to join us.

The meeting is a great opportunity to find out more about the BFG. There will be an update on recent activities, how we've spent the funds we raised for the school, and our future plans, including the school library, leavers' t-shirts and food pantry. **All are welcome** and we'd love to see some new faces, so please come and say hello.

## Join our team

Every parent and carer is automatically a member of the BFG and is welcome to attend any of our meetings and events. On top of this, **we are always looking for people to join our team** and help us plan, organise and run these events, shaping how we support the school and its pupils.

We are currently looking for new committee members to join us in September when some of the existing BFG Committee end their term of office. **Whether you're full of ideas, great with numbers, good with organising, have charity experience or are just keen to contribute in any way you can, we'd love your support.**



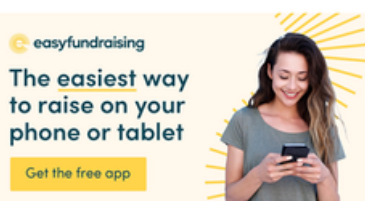
Being part of the BFG is a great way to support our school, connect with other parents and carers, and help make a real difference to the students at Brindishe Green. **All roles can be shared, so you wouldn't be thrown in at the deep end or have to take on any more than you want to.** If you're interested, we'd be happy to have an informal, no-obligation chat. Come along to the meeting next week and find out more!

## The Big Half - 7 September 2025

Last few spaces left for September's Big Half - if you'd like to run a half-marathon on 7 September and raise money for the school, please email Hayley at [bfgsocials@gmail.com](mailto:bfgsocials@gmail.com). Last year we raised over £3,200 for the school, and we'd really love to do even better this year.



For more information visit <https://www.letsdothis.com/gb/e/2025-the-big-half-229483>.



### Fundraising App | Easyfundraising

Raising money for your chosen cause has never been easier with the easyfundraising mobile fundraising app. Learn more now!

[www.easyfundraising.org.uk](http://www.easyfundraising.org.uk)

### Important Dates

**1 May** - BFG Meeting in School

**4 July** - Brindishe Green Summer Fair

**Date TBC** - Summer Term Coffee Morning

**7 September** - The Big Half



@brindishefriendsgroup  
P  
\*/brindishefriendsgroup

[brindishefriendsgroup](#) | Facebook - Linktree

Brindishe Green's parent teacher & friends group (PTA). Charity no 1207252.

[linktr.ee](http://linktr.ee)